

# ISI News

Interuniversity Services Inc.

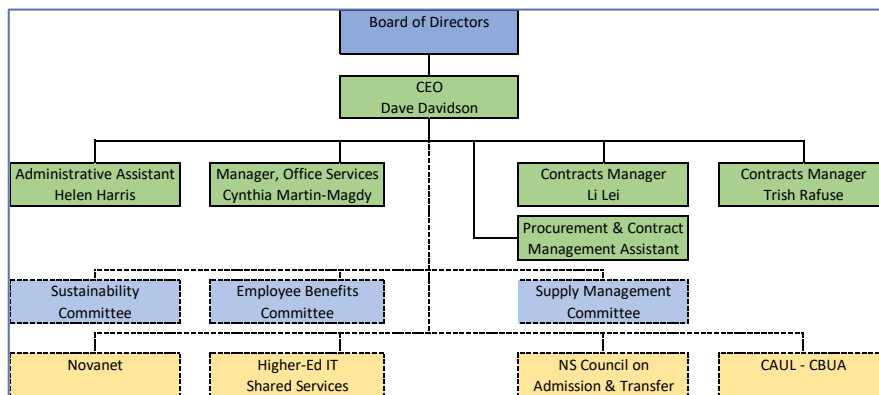
September 2017

Issue 2

## The Organization

The goal of the second installment of the ISI NEWS is to share some preliminary information related to the operating structure of ISI, our various standing committees and four additional independent

organizations for which ISI provides administrative support.



ISI governance falls to the ISI Board of Directors comprised of the VP Finance and Administration from each of ISI's 18-member institutions. ISI has five full-time staff including the CEO. Two full-time staff are dedicated to finance and administrative support for all five

organizations, and two full-time staff and a co-op student are dedicated to collaborative procurement. In addition to organizational leadership, the CEO, and the Administrative Assistant maintain support for the Employee Benefit and Sustainability portfolio.

ISI's success is driven by the member represented on the three standing committees. In future additions of the ISI NEWS, we will provide regular highlights from each of the three standing committees of ISI.

ISI is pleased to be able to provide administrative support to the four independent, sector based organizations allowing for each to benefit from our shared approach.

## Our Members

<b>New Brunswick</b>	
Mount Allison University	St. Thomas University
University of New Brunswick	Université de Moncton
<b>Newfoundland and Labrador</b>	
Memorial University	
<b>Nova Scotia</b>	
Acadia University	Atlantic School of Theology
Cape Breton University	Dalhousie University
Mount Saint Vincent University	NSCAD University
Nova Scotia Community College	Saint Mary's University
St. Francis Xavier University	Université Sainte-Anne
University of King's College	
<b>Prince Edward Island</b>	
Holland College	University of Prince Edward Island

## Future Additions

Future additions of the ISI NEWS will provide regular updates on the various committee initiatives, contracting activities and member successes.